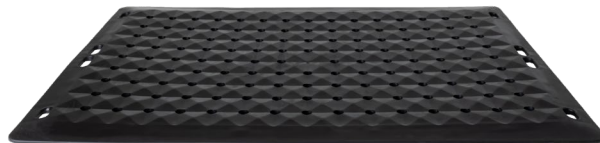


SS2

# Comfort Drainage Mat

## SPECIFICATION SHEET

- Provides excellent ergonomic support
- Holes allow liquid or particles to go through the mat to the floor beneath
- Leg structure channels liquids away from mat and does not allow it to pool underneath
- Anti-slip bottom ensures it stays in place in wet areas
- Easy to lift and clean
- Anti-microbial additive ensures no growth of bacteria or mold occurs



<b>DIMENSIONS</b>	.75 in x 28 in x 40 in
<b>WEIGHT</b>	14 lbs
<b>DRAINAGE HOLE DIAMETER</b>	.75 in
<b>COMPOSITION</b>	TPE (Thermoplastic Elastomer)
<b>RoHS COMPLIANCE</b>	RoHS Compliant
<b>DUROMETER</b>	Shore hardness "A" 60
<b>AGENCY RATING</b>	FDA Compliant; 21 CFR 177.2600 *
<b>TEAR STRENGTH (ASTM D624)</b>	140 lbf/in
<b>TENSILE STRENGTH (ASTM D412)</b>	920 PSI
<b>TENSILE ELONGATION (ASTM D412)</b>	760%
<b>TABER ABRASION (ASTM D4060)</b>	Negligible Wear
<b>DENSITY (ASTM D792)</b>	1.18
<b>COMPRESSION SET (ASTM D395B)</b>	17%
<b>RECYCLABILITY</b>	Can be recycled, recycle code is "7"
<b>FUNGAL RESISTANCE (ASTM G-21-15)</b>	0 (sample remained free of fungal growth) *
<b>BACTERIAL RESISTANCE (ISO 22196:2011)</b>	Good Performance *
<b>FLAMMABILITY (UL 94)</b>	HB
<b>STOCKED COLORS</b>	Black, Blue, Grey

\* results available upon request